

Engine Model	Cummins ISLe340
Engine Rated Power	250 kW (340 hp) @ 2,200 rpm
Max. Rated Lifting Load	50 T
Max. Lifting Height of Boom	43.0 m
Outrigger span (Longitudinal×Transversal)	5900/6900 mm

TC500A

TRUCK CRANE

 **LIUGONG**



TOUGH WORLD. TOUGH EQUIPMENT.

TC500A SPECIFICATIONS >>>

ENGINE	
Emission Regulation	EURO III
Make	Dongfeng Cummins
Model	ISLe340
Gross Power	250 kW (340 hp) @ 2,200 rpm
Torque	1350 Nm/1400 r/min

DRIVE PERFORMANCE	
Transmission Model	9JS150T-B
9th Maximum Speed, fwd	80 km/h
1th Minimum Speed, fwd	3 km/h
Turning Radius	<24 m
Theoretical Gradeability	40 %
Minimum Ground Clearance	285 mm
Approach angle	19°
Departure angle	12°
Braking distance(at 30km/h)	<10 m
Fuel consumption of 100 km	45 L

DIMENSIONS	
Overall Length	14100 mm
Overall Width	2800 mm
Overall Height	3600 mm

OPERATING WEIGHTS	
Dead weight in Travel Mode	41,490 kg
Weight on Front Wheels	7,990 kg
Weight on Rear wheels	25,600 kg

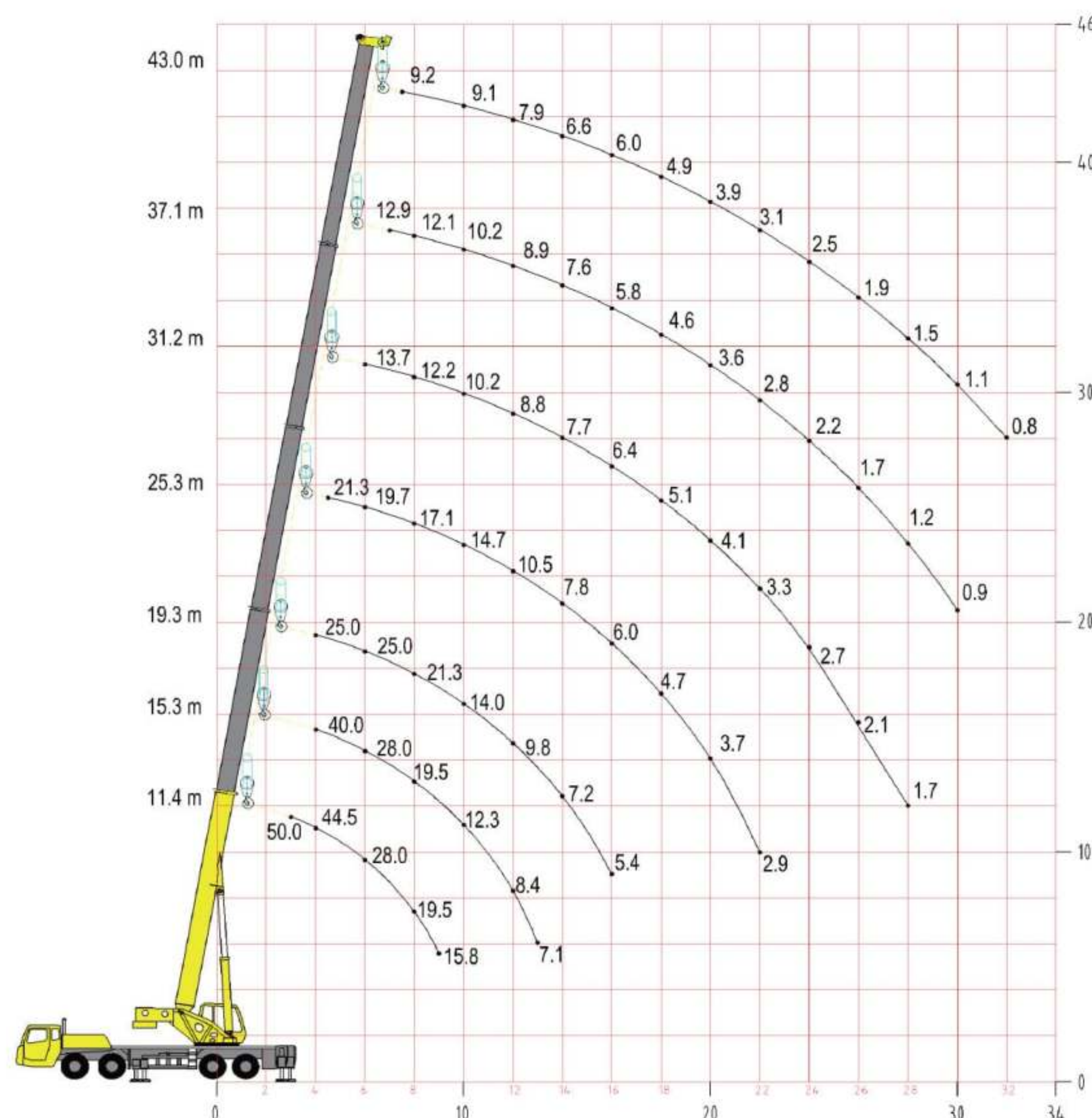
LIFTING PERFORMANCE	
Maximum Lifting Capacity	50 T
Minimum Working Radius	3 m
Maximum Load Moment of Boom	1800 kNm
Maximum Load Moment of Full-extended Boom	962 kNm
Maximum Length of Full-extended Boom	43.0 m
Length of Jib	16 m
Outrigger span (Longitudinal×Transversal)	5900/6900 mm

WORKING PERFORMANCE	
Full extension time of boom	220 s
Full lifting/descending time of boom	40/60 s
Slewing speed	2.0 r/min
Max.single rope lifting speed of winchs (no load)	130 m/min

TIRES	
Tire Size	12.00R20 – 18 PR

THE FIGURE OF TC500A LIFTING CAPITING

BOOM LENGTH	11.4 m	19.3 m	31.2 m	43.0 m
	n=8	n=5	n=4	n=3
3.0 m	50.0 T			
5.0 m	35.0 T	25.0 T		
7.0 m	23.0 T	25.0 T	13.2 T	
8.0 m	19.5 T	21.3 T	12.2 T	9.2 T
10.0 m		14.0 T	10.2 T	9.1 T
12.0 m		9.8 T	8.8 T	7.9 T
14.0 m		7.2 T	7.7 T	6.6 T
16.0 m		5.4 T	6.4 T	6.0 T
18.0 m			5.1 T	4.9 T
20.0 m			4.1 T	3.9 T
22.0 m			3.3 T	3.1 T
24.0 m			2.7 T	2.5 T
26.0 m			2.1 T	1.9 T
28.0 m			1.7 T	1.5 T
30.0 m				1.1 T



KEM Tower Lantai 15, Jl. Landasan Pacu Barat Kav. 2 B-10, Gunung Sahari Selatan, Kemayoran Jakarta Pusat 10610
Phone : +62 21 6570 4111 (Hunting) | Fax : +62 21 6570 4110 | Email : info@probesco.com

Jakarta | Surabaya | Medan | Pekanbaru | Padang | Jambi | Lampung | Palembang | Bengkulu | Balikpapan | Banjarmasin | Pontianak | Sampit | Samarinda | Tarakan | Ketapang | Makassar | Manado | Timika | Kendari